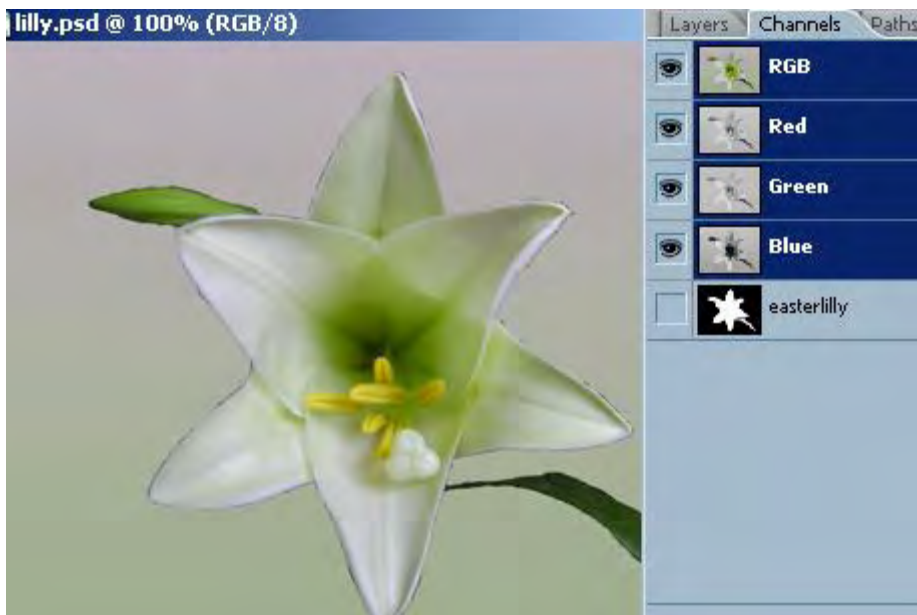
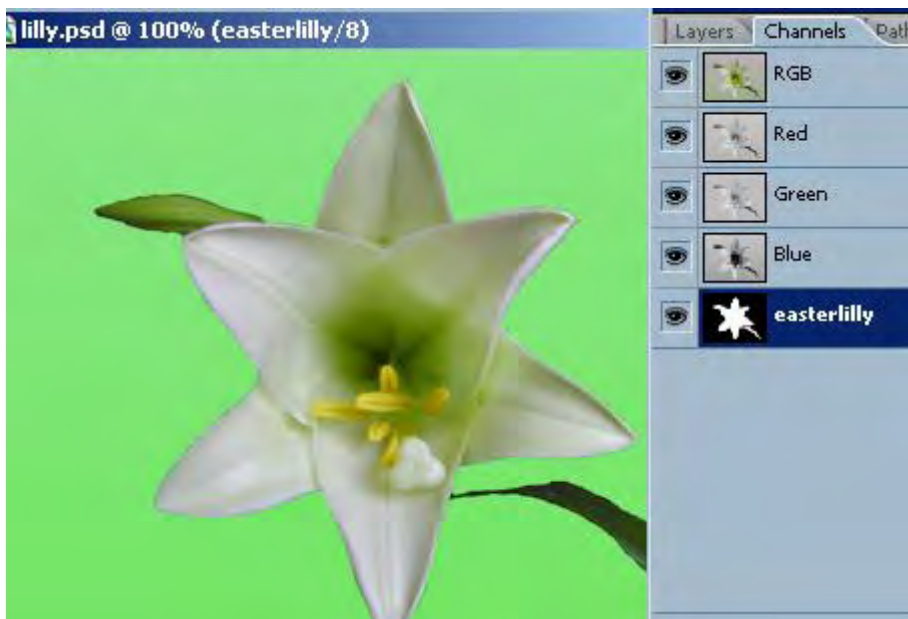


One of my students wanted to know if it is possible to continue to work on a mask. She sent me this file.



1. First, notice that she had saved the mask, and she had saved the image in psd format. If she hadn't done those things, the mask would not have been there.
2. To load the mask, all you have to do is make it active and make all the channels visible, as in the illustration below.



Yes, I have my rubylith set to green instead of red. Yours will probably be red, unless you've changed it to contrast better with what you are masking.

3. Zooming in clearly shows that there are bits and pieces of the old background clinging to the edges of the lily.

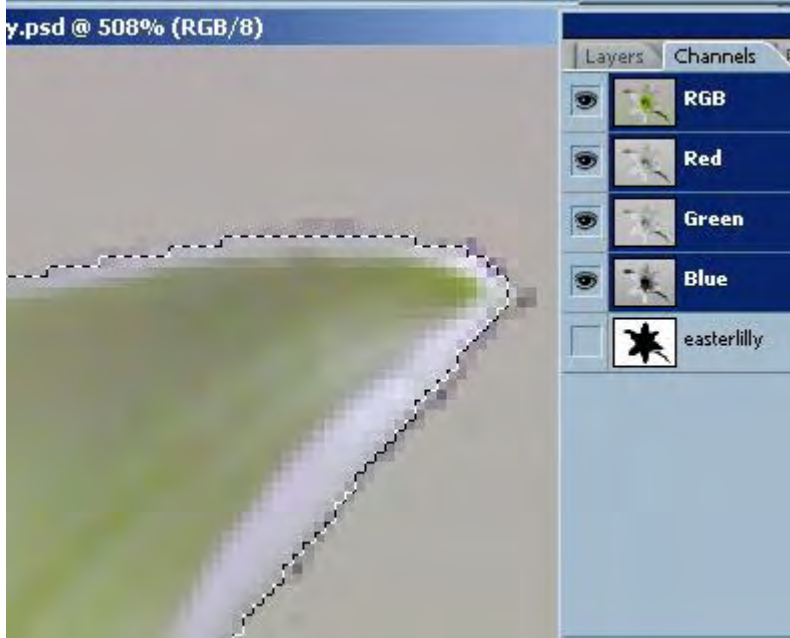


4. Fix them using an appropriate brush - in this case I would probably use a small, hard edged brush. Default colors. Black paints the mask.



5. Invert the masking to check the edge. Ctrl-I.

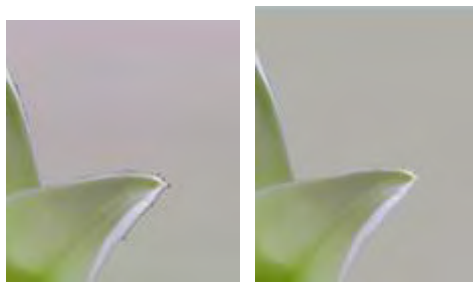
6. To exit the mask, just make it no longer visible. To load it, ctrl-click on the mask thumbnail.



Here, the mask is not visible, but it is loaded as a selection.

7. Be sure you have the right part selected. By that I mean, you can't tell by looking at the petal above whether it is selected and the background is protected, or whether the background is selected and the petal is protected.

We want (in this case) to have the background selected.



Here's the result of the new mask.
Before, on the left. After is on the right.

Christine Frey
Instructor, [Eclectic Academy](#)